


1350nm 2mW~3mW DFB Coaxial Pigtailed Laser Diode with 9um SMF | Built-in Isolator

1350nm SM Fiber Coupled LD with Single Mode Fiber (SM Fiber) | Built-in PD

WSLP-1350-002m-9-DFB

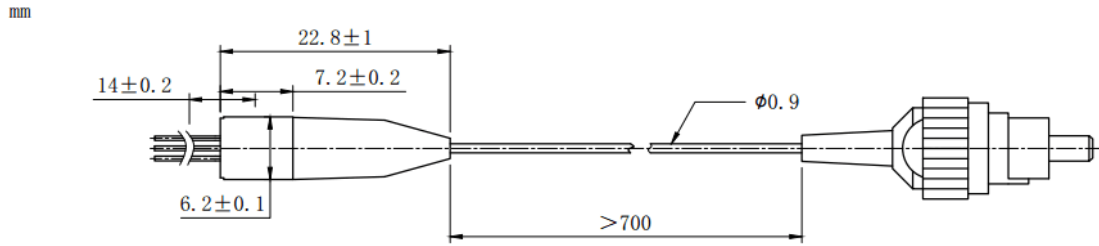
Wavespectrum Laser Group

www.wavespectrum-laser.com

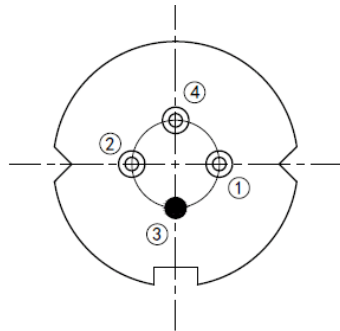
PARAMETER	SYMBOL	VALUE	UNIT	
LD Reverse Voltage	V_r	2.0	V	
PD Reverse Voltage	$V_{r(PD)}$	15	V	
Operating Temperature	T_{op}	-40~+85	°C	
Storage Temperature	T_{stg}	-40~+100	°C	
Lead soldering temperature (10 sec.)	T_{is}	260	°C	
Features: <ul style="list-style-type: none"> ● 1350nm ● DFB Laser Diode ● Built-in Photodiodes ● 9um SM Fiber ● Built-in Isolator ● Coaxial/Receptacle Package 				
Applications: <ul style="list-style-type: none"> ● Test Equipments ● Optical Transmitter of Analog Signal ● Optical Transmitter of Data Signal 				
Specifications		WSLP-1350-002m-9-DFB		
		Min	Type	Max
Center Wavelength@25°C		±3nm	1350nm	±10nm
Laser Type		DFB		
Output Power		----	2mW	----
Fiber Core		9um SM Fiber		
Threshold Current (Typ.) I_{th}		----	5mA	15mA
Operating Current		----	30mA	35mA
Operating Voltage		----	1.4V	1.7V
Spectral Width (FWHM)		----	0.3nm	1nm
SMSR		----	35dB	----
Monitor Current		0.1mA	----	----
PD Capacitance		----	10pF	20pF
PD Dark Current		----	----	0.1uA
Optical Isolation		----	30dB	----
Package Style		Pigtail (Receptacle Optional)		
Recommended Operation Temperature		25°C		
Connector		FC/SC/SMA905		



Coaxial Package View:



Pin Bottom View (A-Type):



PIN 1	PD (+)
PIN 2	LD (-)
PIN 3	LD (+), CASE
PIN 4	PD (-)

**Electrically shorten LD module and store in non-extreme conditions.
Suggest using the constant current power supply.**

