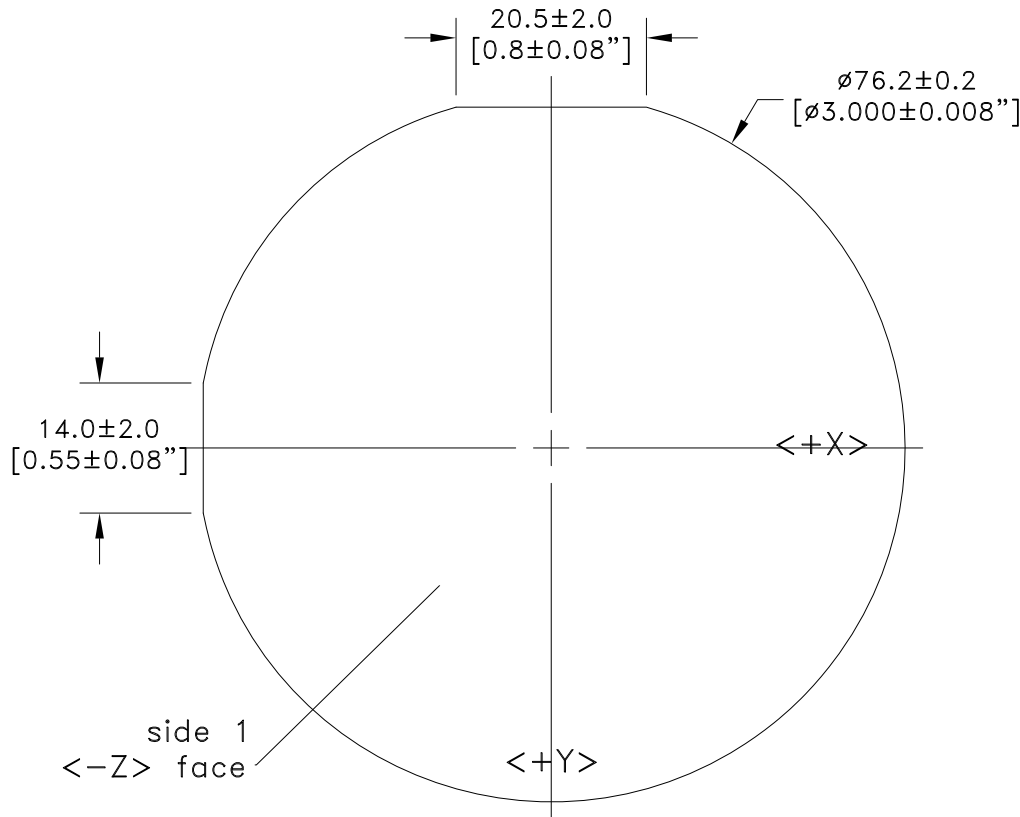
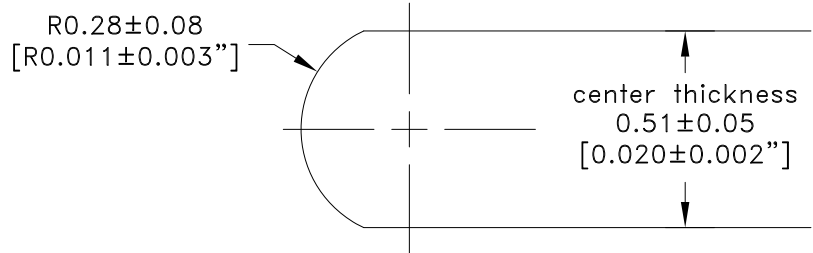


Notes:

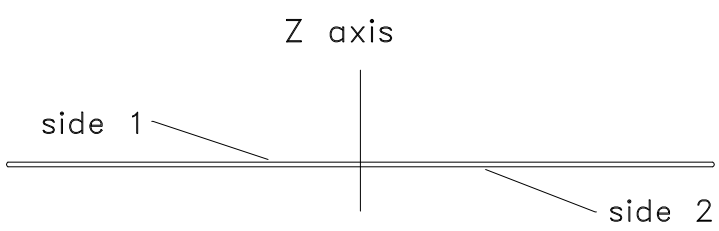
- 1.0 Material
Lithium Niobate, optical grade
- 2.0 Orientations
 - 2.1 Wafer surface is normal to $\langle Z \rangle \pm 0.3^\circ$
 - 2.2 Flats
 - 2.2.1 Primary flat is normal to $\langle -Y \rangle \pm 0.3^\circ$.
 - 2.2.2 Secondary flat is $90^\circ \pm 1^\circ$ counter clockwise from the primary flat when viewing the $\langle -Z \rangle$ face.
- 3.0 Edge
 - 3.1 All edges rounded with $R0.28 \pm 0.08\text{mm}$.
 - 3.2 No chips greater than 0.5mm in penetration and 1.0mm in length.
- 4.0 Surfaces
 - 4.1 Side 1 $\langle -Z \rangle$ face
Polished, 10-5 scratch-dig with 1mm edge exclusion. No pits or scratches visible with reflected light and unaided eye.
 - 4.2 Side 2 $\langle +Z \rangle$ face
Polished, 20-10 scratch-dig with 1mm edge exclusion. Light pits and scratches visible with reflected light and unaided eye.
- 5.0 Flatness (3mm edge exclusion)
 - 5.1 Warp $< 20\mu\text{m}$
 - 5.2 TTV $< 10\mu\text{m}$



Document
01/24/14
Control



Wafer Edge Detail, 50X



THIS DOCUMENT IS THE PROPERTY OF G&H PALO ALTO. IT IS NOT TO BE REPRODUCED OR DISCLOSED IN WHOLE OR IN PART OTHER THAN BY EMPLOYEES OF G&H PALO ALTO AND ITS CONTRACTED REPRESENTATIVES AND DISTRIBUTORS. ANY EXCEPTION REQUIRES THE WRITTEN CONSENT OF AN AUTHORIZED REPRESENTATIVE OF G&H PALO ALTO.

Material: Lithium Niobate		DR. Igordon	07-15-02	
Unless otherwise specified, dimensions in mm		CHK.		
Tolerances		APPD.		Title: LNIO 76.2 ϕ x 0.51mm, -Z Po/Po, -Y and -X FLT
Inches	Millimeters	Wafer Code: LNA--Z:076.051DN		
.X \pm 0.1 .XX \pm 0.01 .XXX \pm 0.005 .XXXX \pm 0.0020	X \pm 0.5 .X \pm 0.25 .XX \pm 0.1 .XXX \pm 0.05	Customer Approval:		Size: A
Angles \pm 0.5°		DO NOT SCALE DRAWING		Dwg. No: 99-00042-01
				Rev: C
				Scale: 1.2:1
				Sheet 1 of 1