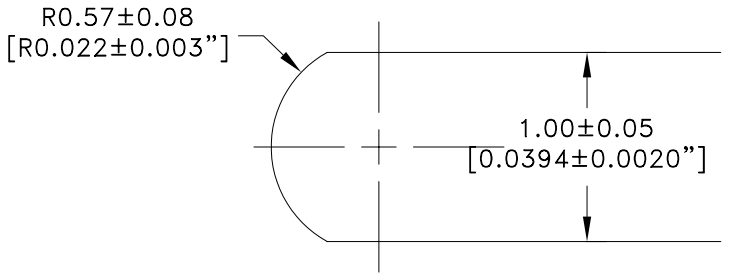
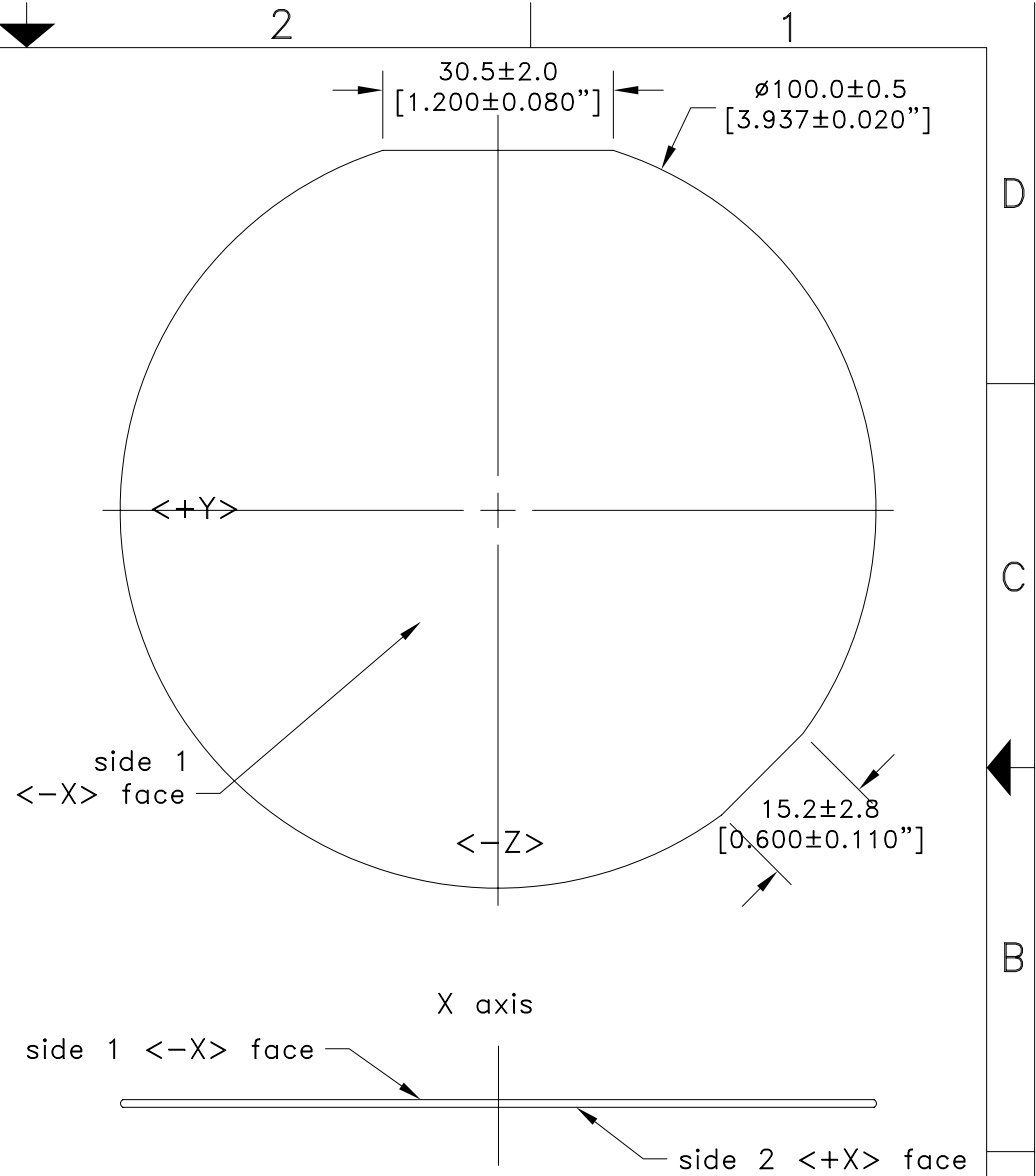


Notes:


- 1.0 Material
Lithium Niobate optical grade
- 2.0 Orientations
 - 2.1 Wafer surface is normal to $\langle X \rangle \pm 0.5^\circ$
 - 2.2 Flats
 - 2.2.1 Primary flat is normal to $\langle +Z \rangle \pm 0.5^\circ$.
 - 2.2.2 Secondary flat is $135^\circ \pm 1^\circ$ clockwise from the primary flat when viewing the $-X$ face.
- 3.0 Edge
 - 3.1 All edges rounded with $R0.57 \pm 0.08$ mm.
 - 3.2 No more than 5 edge chips greater than 0.5mm in penetration and 1.0mm in length.
- 4.0 Surfaces
 - 4.1 Side 1 $\langle -X \rangle$ face
Polished 10-5 scratch-dig with 1mm edge exclusion.
No pits or scratches visible with reflected light and unaided eye.
 - 4.2 Side 2 $\langle +X \rangle$ face
Ground, R_a 0.50-0.70 μ m.
- 5.0 Flatness
TIR < 15 μ m

For Reference Only



Wafer Edge Detail, 25X

THIS DOCUMENT IS THE PROPERTY OF CRYSTAL TECHNOLOGY INC. IT IS NOT TO BE REPRODUCED OR DISCLOSED IN WHOLE OR IN PART OTHER THAN BY EMPLOYEES OF CRYSTAL TECHNOLOGY AND ITS CONTRACTED REPRESENTATIVES AND DISTRIBUTORS. ANY EXCEPTION REQUIRES THE WRITTEN CONSENT OF AN AUTHORIZED REPRESENTATIVE OF CRYSTAL TECHNOLOGY.

Material: Lithium Niobate	DR. gfang	08/19/05	 Crystal Technology, Inc. An EPCOS Company										
Unless otherwise specified, dimensions in mm	CHK.												
Tolerances	APPD.												
<table border="1"> <thead> <tr> <th>Inches</th> <th>Millimeters</th> </tr> </thead> <tbody> <tr> <td>.X ± 0.1</td> <td>X ± 0.5</td> </tr> <tr> <td>.XX ± 0.01</td> <td>.X ± 0.25</td> </tr> <tr> <td>.XXX ± 0.005</td> <td>.XX ± 0.1</td> </tr> <tr> <td>.XXXX ± 0.0020</td> <td>.XXX ± 0.05</td> </tr> </tbody> </table>	Inches	Millimeters	.X ± 0.1	X ± 0.5	.XX ± 0.01	.X ± 0.25	.XXX ± 0.005	.XX ± 0.1	.XXXX ± 0.0020	.XXX ± 0.05	Wafer Code: LNA--X:100.100CN	Title: LNIO 100ϕ x 1.0mm, -X Po/Gr +Z FLT, 2nd FLT 135°	
Inches	Millimeters												
.X ± 0.1	X ± 0.5												
.XX ± 0.01	.X ± 0.25												
.XXX ± 0.005	.XX ± 0.1												
.XXXX ± 0.0020	.XXX ± 0.05												
Angles $\pm 0.5^\circ$	Customer Approval:	Size: A	Dwg. No: 97-01912-01	Rev: A									
DO NOT SCALE DRAWING		Scale: 1:1	Sheet 1 of 1										