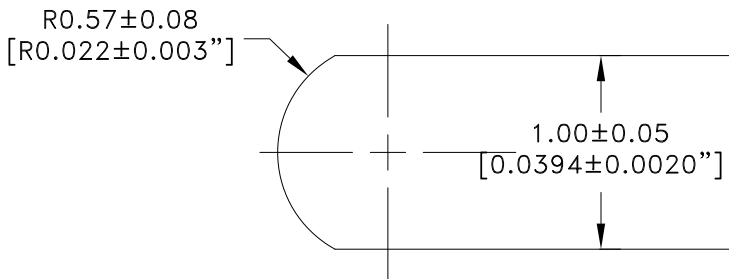
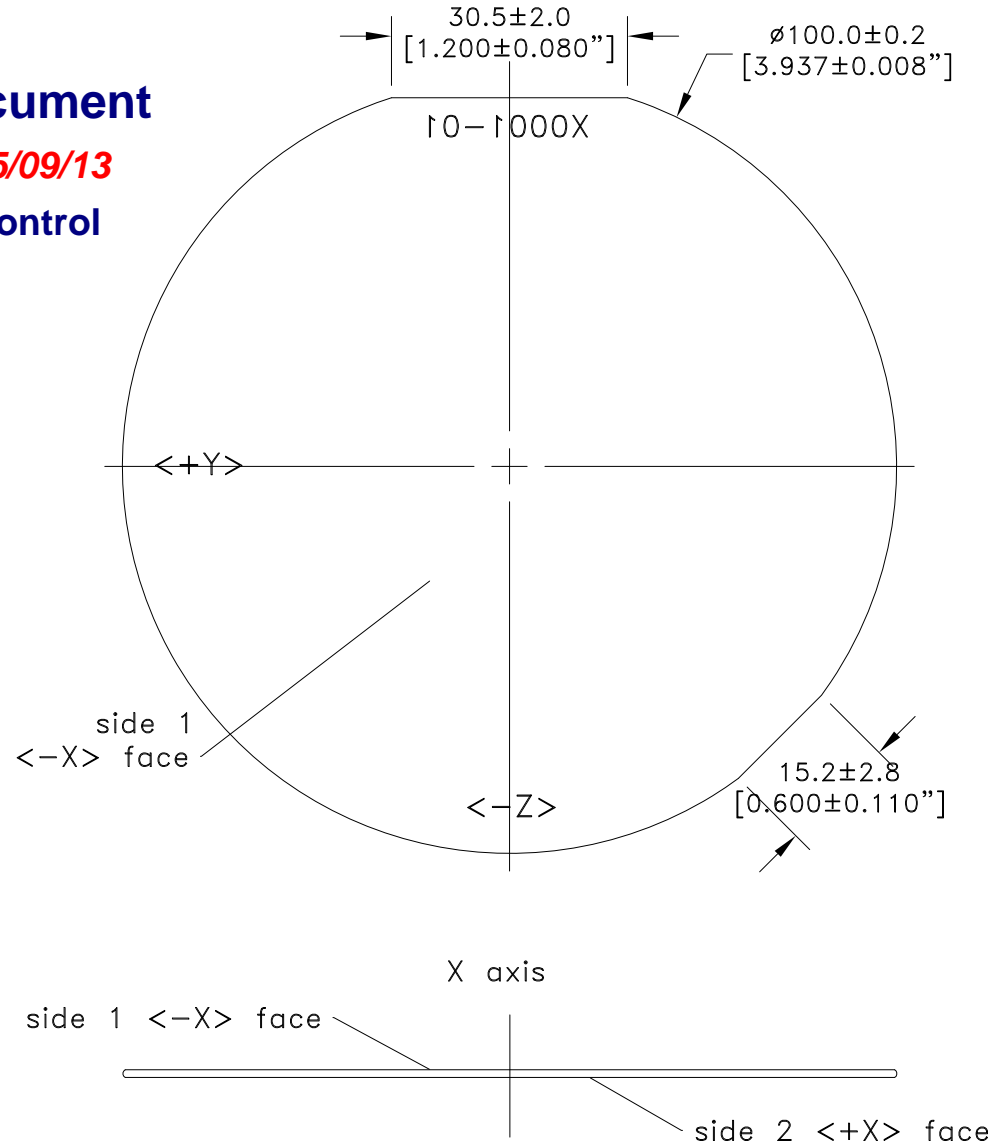


Notes:

- 1.0 Material
Lithium Niobate optical grade
- 2.0 Orientations
 - 2.1 Wafer surface is normal to $\langle X \rangle \pm 0.2^\circ$
 - 2.2 Flats
 - 2.2.1 Primary flat is normal to $\langle +Z \rangle \pm 0.25^\circ$.
 - 2.2.2 Secondary flat is $135^\circ \pm 1^\circ$ clockwise from the primary flat when viewing the $-X$ face.
- 3.0 Edge
 - 3.1 All edges rounded with $R0.57 \pm 0.08\text{mm}$.
 - 3.2 No edge chips greater than 0.5mm in penetration and 1.0mm in length.
- 4.0 Surfaces
 - 4.1 Side 1 $\langle -X \rangle$ face
Polished 10-5 scratch-dig with 1mm edge exclusion. No pits or scratches visible with reflected light and unaided eye.
 - 4.2 Side 2 $\langle +X \rangle$ face
Polished 20-10 scratch-dig with 1mm edge exclusion. Light pits and scratches visible with reflected light and unaided eye allowed.
- 5.0 Flatness
 - 5.1 warp $< 20\mu\text{m}$
 - 5.2 TTV $< 10\mu\text{m}$
- 6.0 Laser Marking
 - 6.1 Center text under the primary flat on the $+X$ side. Begin with X followed by a 4-digit boule serial number separated by a dash from a 2-digit wafer sequence number (X0001-01).
 - 6.2 FONT: SEM 15x23
HEIGHT=3.0mm, WIDTH=1.5mm, SEPARATION=2.2mm
DISTANCE FROM FLAT=1mm from top of text.
- 7.0 Test Data
Supply certificate of analysis sheet 97-01763-10-110.

Document
05/09/13
Control



Wafer Edge Detail, 25X

THIS DOCUMENT IS THE PROPERTY OF G&H PALO ALTO IT IS NOT TO BE REPRODUCED OR DISCLOSED IN WHOLE OR IN PART OTHER THAN BY EMPLOYEES OF G&H PALO ALTO AND ITS CONTRACTED REPRESENTATIVES AND DISTRIBUTORS. ANY EXCEPTION REQUIRES THE WRITTEN CONSENT OF AN AUTHORIZED REPRESENTATIVE OF G&H PALO ALTO.

Material: Lithium Niobate		DR. Igordon	05-09-02	
Unless otherwise specified, dimensions in mm		CHK.		
Tolerances		APPD.		Title: LNIO 100 ϕ x 1.0mm, $-X$ Po/Po $+Z$ FLT, TTV $<10\mu\text{m}$, lasermark
Inches	Millimeters	Wafer Code: LNA--X:100.100DN		
.X \pm 0.1 .XX \pm 0.01 .XXX \pm 0.005 .XXX \pm 0.0020	X \pm 0.5 X \pm 0.25 XX \pm 0.1 XXX \pm 0.05	Customer Approval:		Size: A
Angles \pm 0.5°		DO NOT SCALE DRAWING		Dwg. No: 97-01763-10
				Rev: B
				Scale: 1:1
				Sheet 1 of 1