

SPECIFICATIONS

| | | | |
|--------------------------|------------------------|--------------------|--|
| AO Medium | TeO ₂ | | |
| Acoustic Velocity | 4.2 mm/μs | | |
| Active Aperture* | 2.5 mm 'L' X | 0.45 mm 'H' | |
| Center Frequency (Fc) | 200 MHz | | |
| RF Bandwidth | 50 MHz @ | -10 dB Return Loss | |
| Input Impedance | 50 Ohms Nominal | | |
| VSWR @ Fc | 1.3:1 Max | | |
| Wavelength | 488-532 nm | | |
| Insertion Loss | 5 % Max | | |
| Reflectivity per Surface | 1 % Max | | |
| Anti-Reflection Coating | MIL-C-48497 | | |
| Optical Power Density | 250 W/mm ² | | |
| Contrast Ratio | 1000:1 Min | | |
| Polarization | 90 ° To Mounting Plane | | |

PERFORMANCE VS WAVELENGTH

| Wavelength (nm) | 532 | 488 |
|-------------------------|------|------|
| Saturation RF Power (W) | .65 | 0.65 |
| Bragg Angle (mr) | 12.7 | 11.6 |
| Beam Separation (mr) | 25.4 | 23.2 |

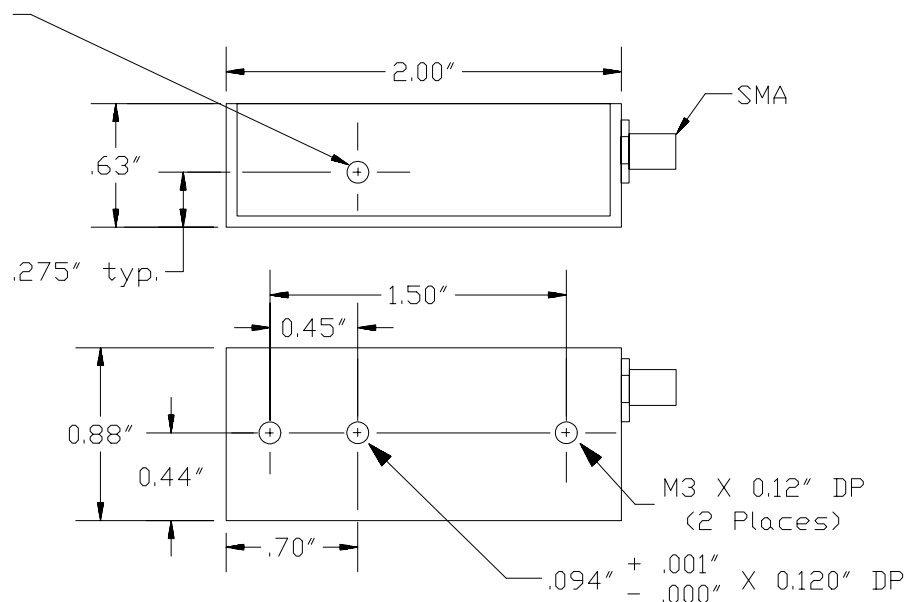
PERFORMANCE VS BEAM DIAMETER

| Beam Diameter (μm) | 60 | 80 | 100 | 120 |
|----------------------------|-----|-----|-----|------|
| at Wavelength (nm) | 488 | 488 | 488 | 488 |
| Diffraction Efficiency (%) | 70 | 75 | 80 | 80 |
| Rise Time (nsec) | 13 | 16 | 19 | 23 |
| Modulation Bandwidth | 52 | 40 | 31 | 26.5 |
| | 15 | 8 | 4 | 2 |

*Active Aperture: Aperture over which performance specifications apply.

Outline Drawing:

Package Style 4



Notes:

THIS DOCUMENT IS THE PROPERTY OF CRYSTAL TECHNOLOGY, INC. IT IS NOT TO BE REPRODUCED OR DISCLOSED IN WHOLE OR IN PART OTHER THAN BY EMPLOYEES CRYSTAL TECHNOLOGY AND ITS CONTRACTED REPRESENTATIVES AND DISTRIBUTORS. ANY EXCEPTION REQUIRES THE WRITTEN CONSENT OF AN AUTHORIZED REPRESENTATIVE OF CRYSTAL TECHNOLOGY.

| | | | |
|---|-----|-----------------------|---|
| TOLERANCES: .XX ± .01 .XXX ± .005 | DR | A. Campi 4/15/2002 | Crystal Technology, Inc. DESCRIPTION: AOMO 3200-146 (Metric Mounting Screw) |
| MATERIAL: | CHK | | |
| FINISH: | APP | | |
| | APP | | PART NUMBER: 97-02648-02 REV: 0 SHEET 1 OF 1 |