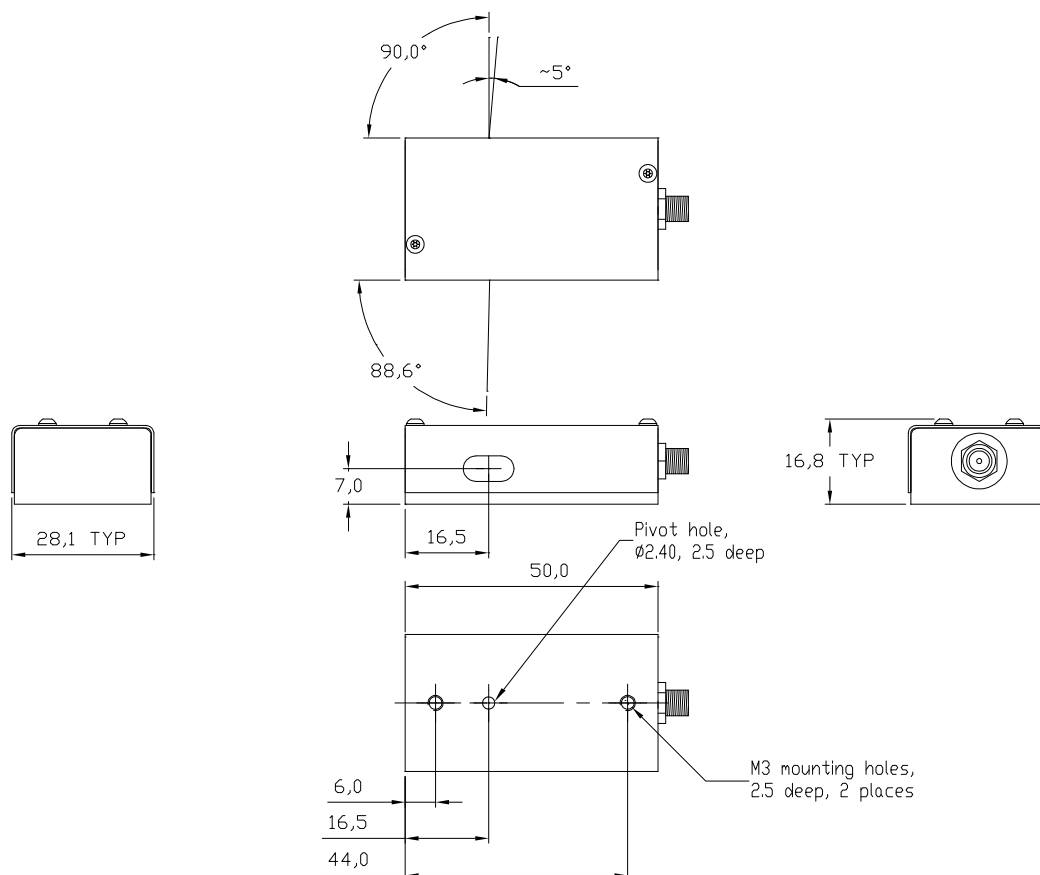


I-FS040-2S2J-3-OM1 Specification:

Model No:	I-FS040-2S2J-3-OM1
Device:	AO Frequency Shifter
Frequency Shift:	40MHz; Up-Shift
Interaction Material:	Tellurium Dioxide
Acoustic Mode:	Slow Shear
Operational Wavelength:	1550nm
AR coating reflectivity:	< 0.3% per surface
Damage Threshold:	> 1MW/cm ²
Active Aperture:	2.0 x 4.0mm (H x W)
Clear Aperture:	3.0 x 5.0mm (min)
Recommended Beam Diameter:	1mm (well collimated)
Input Polarisation:	Linear – horizontal wrt base
Polarisation Alignment:	± 2°
Diffracted Beam Polarisation:	Linear – rotated by 90° wrt input
Diffraction Efficiency:	> 90%
Diffracted Beam Orientation:	~ 1.4° wrt input
Input Impedance:	50Ω
Separation angle (0-order to diffracted-order):	~ 5°
Rise-time (10-90%):	1.6μs/mm
RF Drive power:	0.5W typical (1.0W Max)
RF Connector:	SMA Female
Housing:	Refer to drawing



Revision No: 1.0
Date: 12/11/15

Contact: sales@goochandhousego.com

www.goochandhousego.com

As part of our policy of continuous product improvement we reserve the right to change specifications at any time