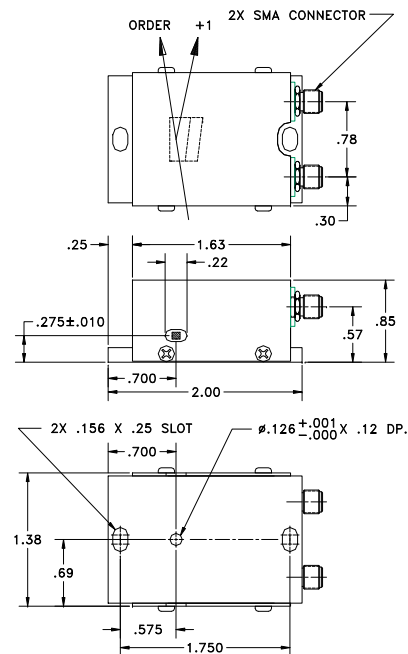


SPECIFICATIONS

OUTLINE DRAWING

AO Medium	TeO <sub>2</sub>
Acoustic Mode	Longitudinal
Acoustic Velocity	4.20 mm/μs
Wavelength	1100 nm
Input Polarization	Random
Output Polarization	Random
Insertion Loss	<3%
Center Frequency (Fc)	225 MHz
RF Bandwidth	130 MHz
RF Power	3 Watts
Active Aperture	.30 mm Dia
Average Diffraction Efficiency	N/A
Flatness Across Bandwidth	N/A
Min Diffraction Efficiency	>55%
Peak Valley at 633 nm	N/A
RMS at 633 nm	N/A
VSWR	2.2 : 1
Scan Angle	34 mrad (130 MHz 1.1 μm)
Time Bandwidth	N/A



Notes:


1. Diffraction Efficiency across frequency range, 210 μm spot, random input polarization.
2. Measured @ 633 nm
3. Input Impedance is 50 Ohms
4. Differential Delay: 4.59 nsec
5. Risetime: 33 nsec (210 μm beam waist).
6. Static Contrast Ratio is 1000 : 1.
7. Anti-Reflection Coating is < 1% both sides

Document

09/13/13

Control

THIS DOCUMENT IS THE PROPERTY OF GOOCH & HOUSEGO. IT IS NOT TO BE REPRODUCED OR DISCLOSED IN WHOLE OR IN PART OTHER THAN BY EMPLOYEES OF GOOCH & HOUSEGO AND ITS CONTRACTED REPRESENTATIVES AND DISTRIBUTERS. ANY EXCEPTION REQUIRES THE WRITTEN CONSENT OF AN AUTHORIZED REPRESENTATIVE OF GOOCH & HOUSEGO.

TOLERANCES: .XX ± .01 .XXX ± .005	DR	Gerl Scholz 9/3/2013	 DESCRIPTION: <b>AODF 4225-2</b>	
MATERIAL:	CHK			
FINISH:	APP		PART NUMBER:	REV:
	APP		97-02378-02	D
			SHEET	1 OF 1